



# FACILITY ROOF HATCH

Angled Stair Access © Ships Ladder Access © Service Access

**SPECIFICATIONS (Model FRH):**

ARCHITECTURAL SPECIALTIES, INC. (ASI) Self Flashing Roof Access Hatch is designed to withstand 40 pounds per sq.ft. live load. Curb and lid to have welded seams.

**MATERIAL TYPE Check One:**

HEAVY DUTY STEEL (Model FRH-HD)

LID: 14 ga. Galv. Steel. LID LINER 18 ga Galv. Steel.  
CURB: 14 ga. Galv Steel, single wall.

ALUMINUM, EPS (Model FRH-AL)

Corrosion Resistant - LID: 12 ga. LID LINER 14 ga  
CURB: 12 ga., single wall.

**FACTORY FINISH**

Steel: Red oxide prime coat.  
Aluminum: Mill.

**How ASI Weathers the Storm:**

① **GASKET:** EPDM closed cell, high density gasket, 3M acrylic adhesive. Continuous weatherproof seal on interior lid.

② **INSULATION: (Lid Panel and Curb):** Rigid 1" polyisocyanurate foam board, foil faced.

③ **AIRCRAFT DÉTENTE CABLE:** Cable is secured opposite of hold open arm to assist in stabilizing lid in windy situations

**STANDARD HARDWARE (retrofit friendly)**

④ **Handle:** Stainless steel turn handle, interior 2 point latching mechanism. Pad lock hasp included for interior/exterior use (padlock not included).

⑤ **Grab Bar:** Interior lid is outfitted with a 24" grab bar with a safety grip for closing hatch.

⑥ **Compression Cylinder(s):** Compression operated, shock absorbing cylinder(s), for lifting assist ease. Units have 1- 2 cylinders depends on size.

⑦ **Hold Open Arm:** Steel (alum) stop arm, locking linkage w/ red vinyl grip handle. Located exit side.

⑧ **Hinges:** Heavy duty pintle hinges with non-corrosive, non-removable pins.

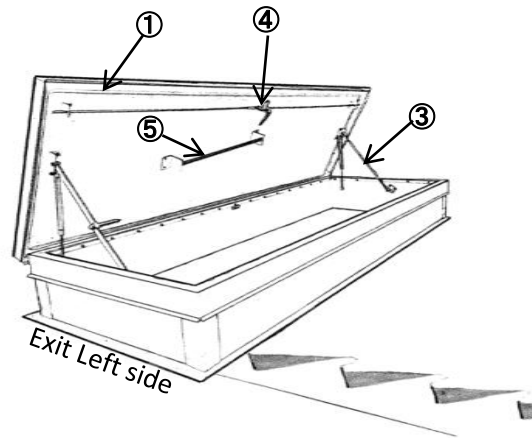
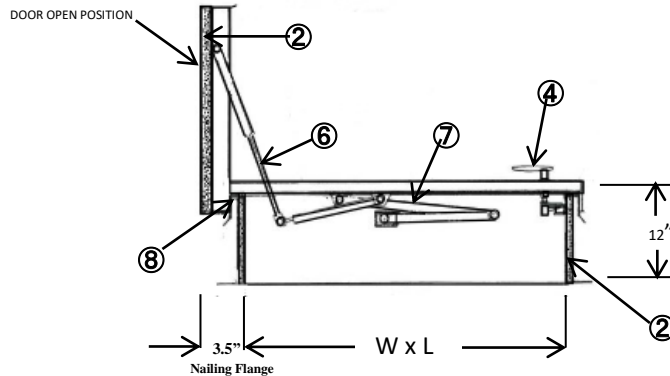
**CHECK HERE FOR OPTIONS, call for price:**

**Curb (DW):** Double Wall Curbs (Exterior Liner).

**Green (LC2) Lid/Curb:** 2" Insulation Option.

**Custom Application(s)** Fill in: \_\_\_\_\_

\_\_\_\_\_



**CHOOSE EXIT SIDE BELOW (L for exit left side, R for exit right side)**  
Shown as exit left side in picture above.

FILL IN (Size in Inches):			
Quant.	Rough Opening Size (W X L)	Hinge side	EXIT L or R

**OSHA COMPLIANT SAFETY ACCESSORY:**

Hatches can be ordered with an OSHA compliant integral safety rail. Call for quote if required. Must be ordered at same time as roof hatch.

<b>Contractor:</b>	<b>Project Name:</b>
<b>Architect:</b>	<b>Project Address:</b>
<b>Date:</b>	<b>City/State:</b>