



UTILITY ROOF HATCH

Vertical Ladder Access © Ships Ladder Access © Multi-Purpose

SPECIFICATIONS (Model URH):

ARCHITECTURAL SPECIALTIES, INC. (ASI) Self Flashing Roof Access Hatch is designed to withstand 40 pounds per sq.ft. live load. Curb and lid to have welded seams.

MATERIAL TYPE Check One:

STANDARD STEEL (Model URH-ST)

LID: 18 ga. Galv. Steel. LID LINER: 22 ga. CRS Steel.
CURB: 18 ga. CRS steel, single wall.

HEAVY DUTY STEEL (Model URH-HD)

LID: 14 ga. Galv. Steel. LID LINER 18 ga Galv. Steel.
CURB: 14 ga. Galv Steel, single wall.

ALUMINUM, EPS (Model URH-AL)

Corrosion Resistant - LID: 12 ga. LID LINER 14 ga
CURB: 12 ga., single wall.

FACTORY FINISH

Steel: Red oxide prime coat.
Aluminum: Mill.

How ASI Weathers the Storm:

① **GASKET:** EPDM closed cell, high density gasket, 3M acrylic adhesive. Continuous weatherproof seal on interior lid.

② **INSULATION (Lid Panel and Curb):** Rigid 1" polyisocyanurate foam board, foil faced.

STANDARD HARDWARE (retrofit friendly)

③ **Handle:** Tapered turn handle with interior pad lock hasp (padlock not included).

④ **Compression Cylinder(s):** Compression operated, shock absorbing cylinder(s), for lifting assist ease. Units have 1 or 2 cylinders depending on size.

⑤ **Hold Open Arm:** Steel (alum) stop arm, locking linkage with red vinyl grip handle.

⑥ **Hinges:** Heavy duty pintle hinges with non-corrosive, non-removable pins.

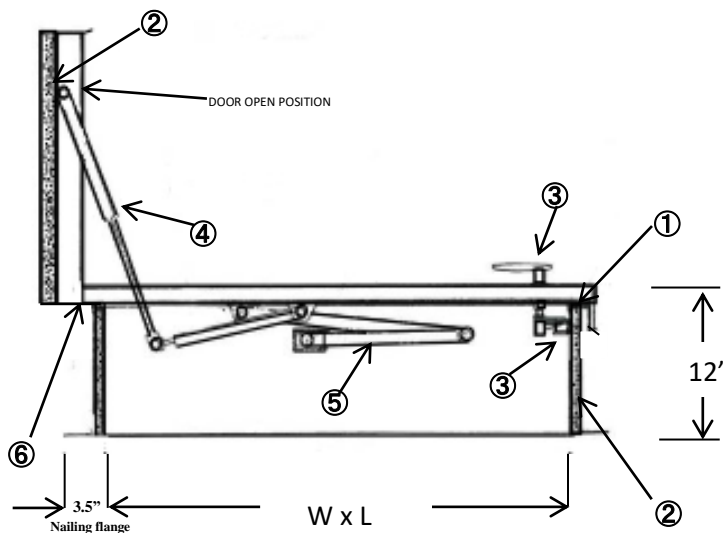
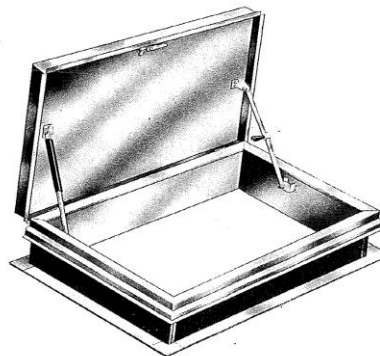
CHECK HERE FOR OPTIONS, call for price:

Handle (SPL): Slam latch with interior & exterior pad lock hasp.

Curb (DW): Double Wall Curbs (Exterior Liner).

Green (LC2) Lid/Curb: 2" Insulation Option.

Custom Application(s) Fill in: _____



FILL IN (Size in Inches):		
Quant.	Rough Opening Size (W X L)	Hinge side

OSHA COMPLIANT SAFETY ACCESSORY:

Hatches can be ordered with an OSHA compliant integral safety rail. Call for quote if required. Must be ordered at same time as roof hatch.

Contractor:	Project Name:
Architect:	Project Address:
Date:	City/State: